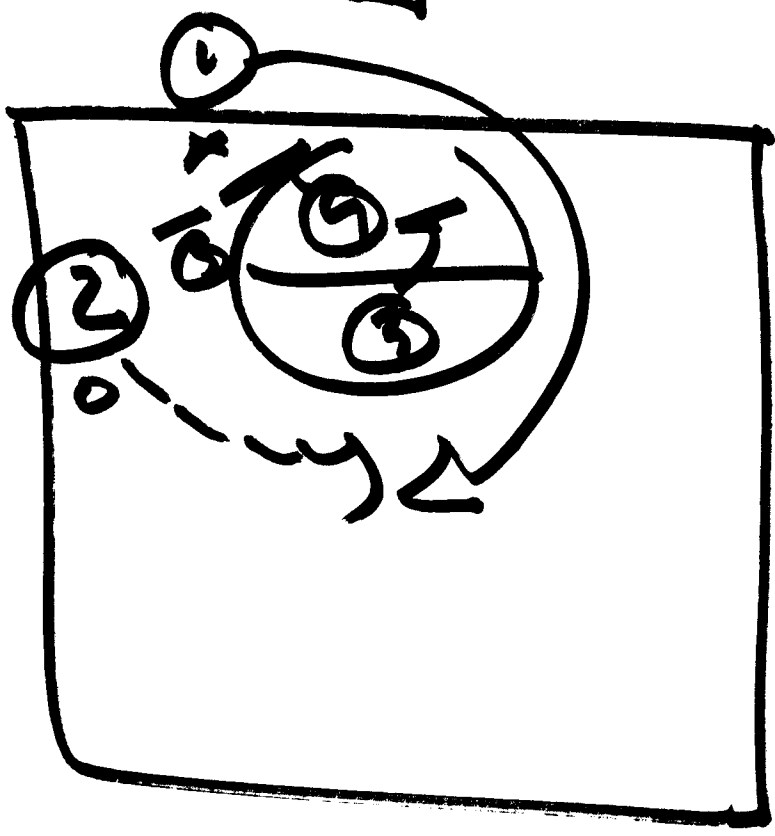
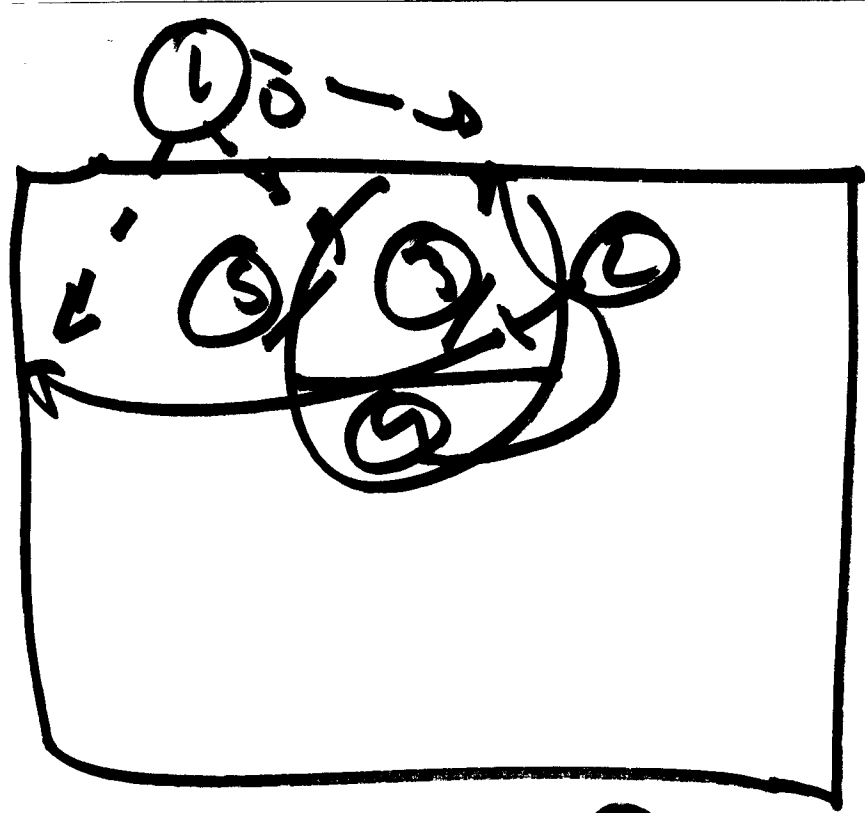


NEW

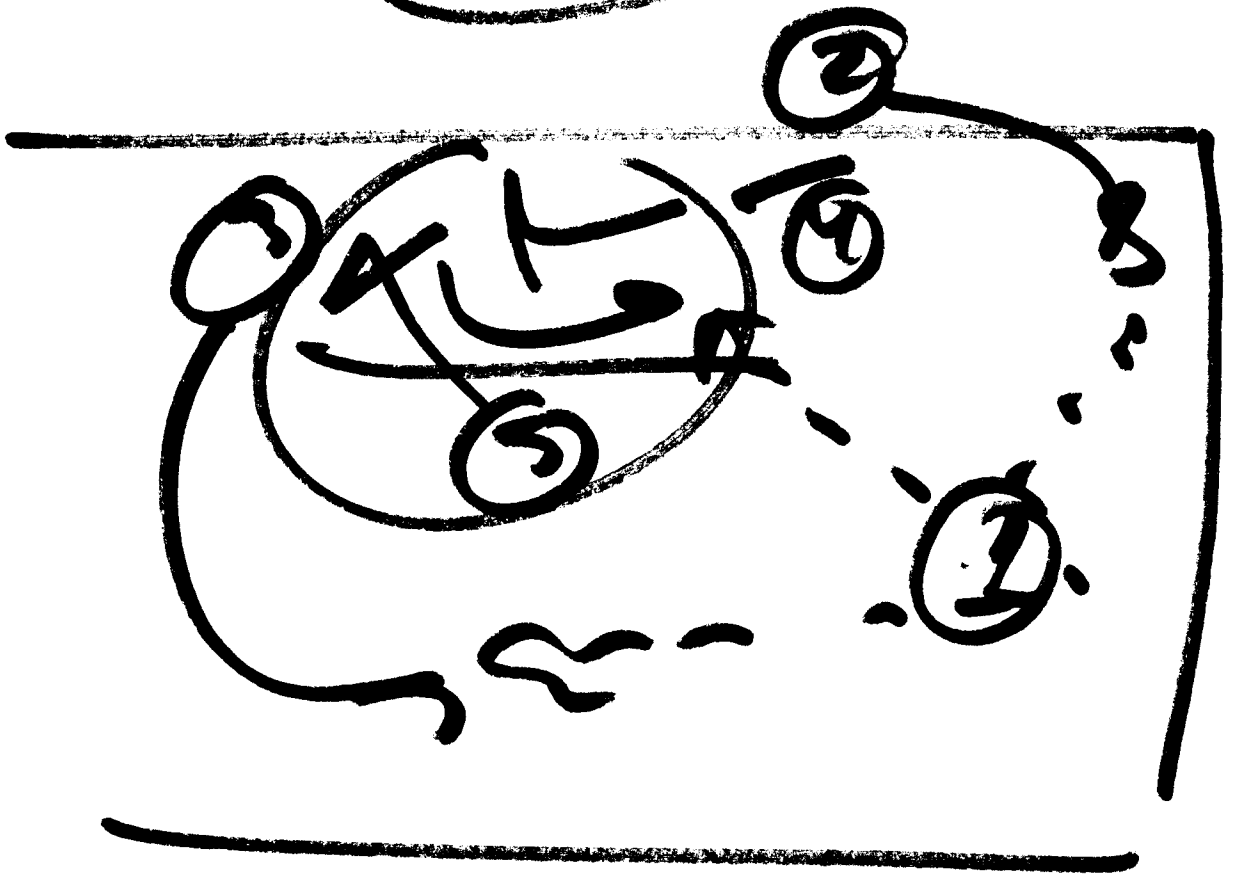
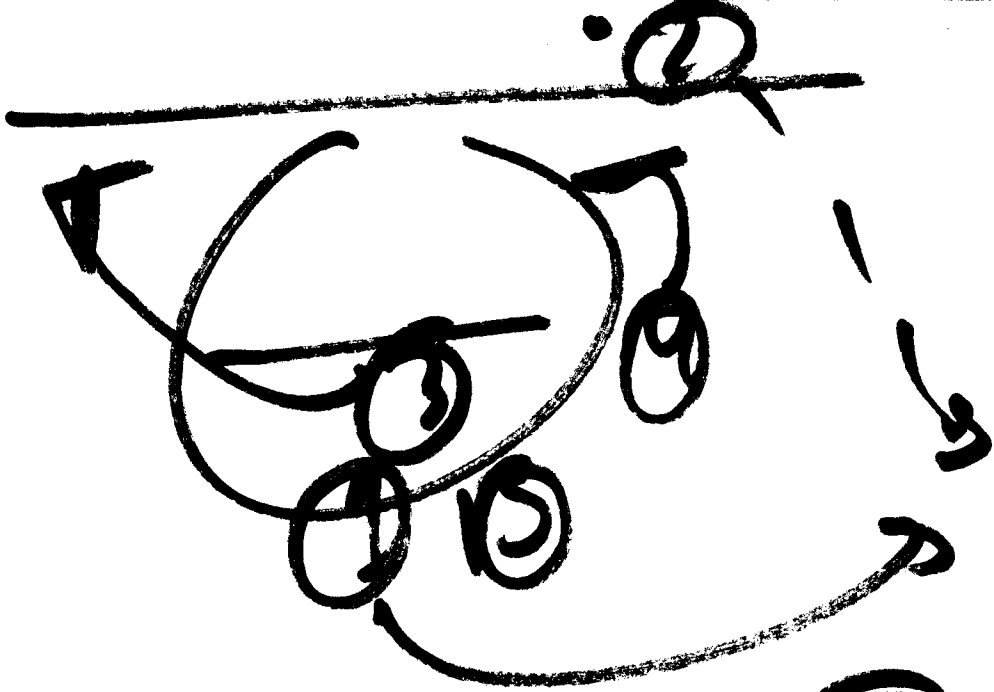
Baseline

Plays

2012-13

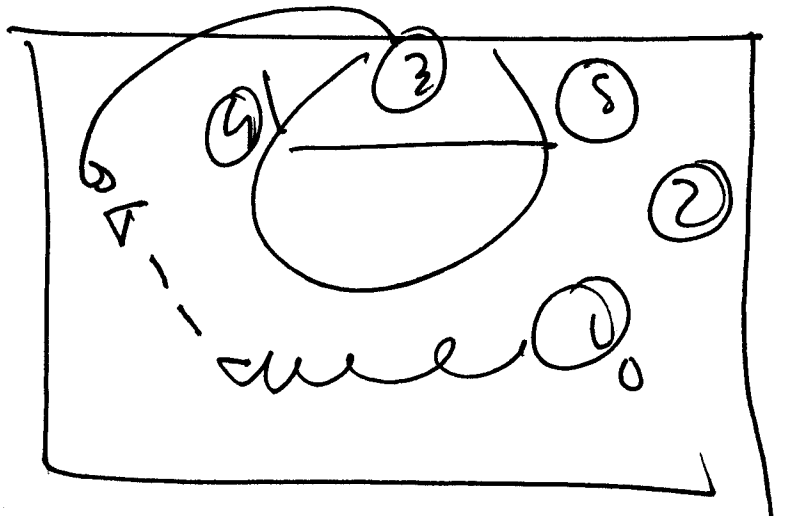
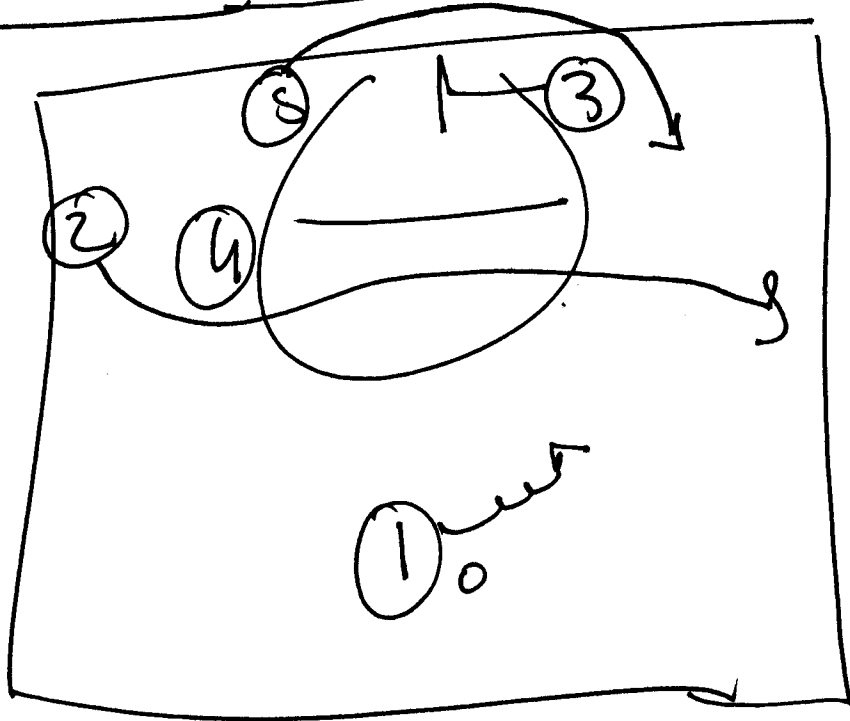
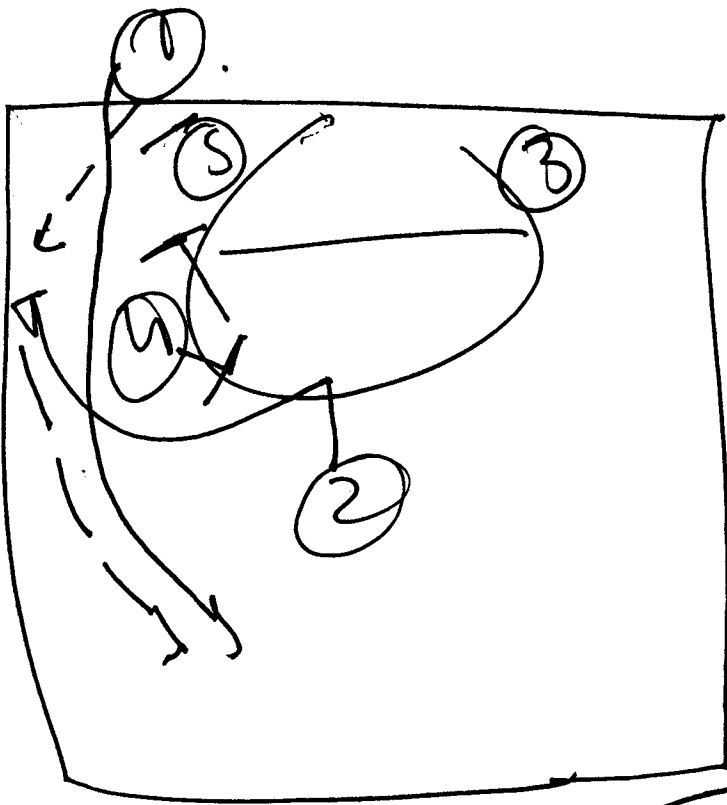


K

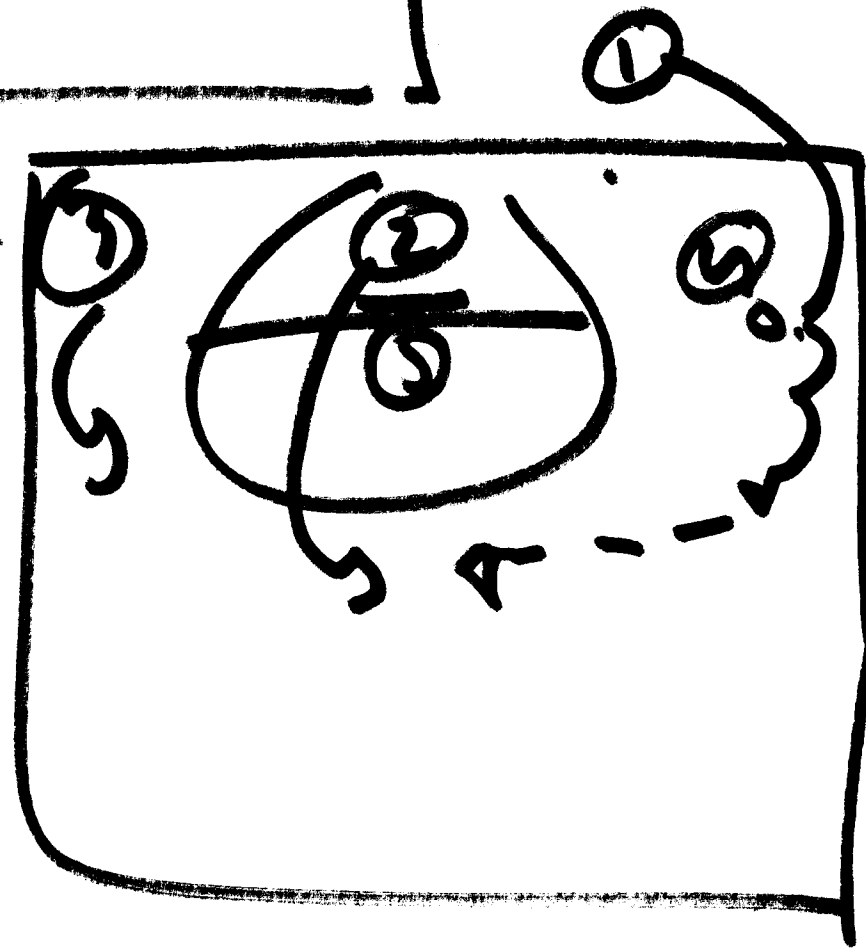
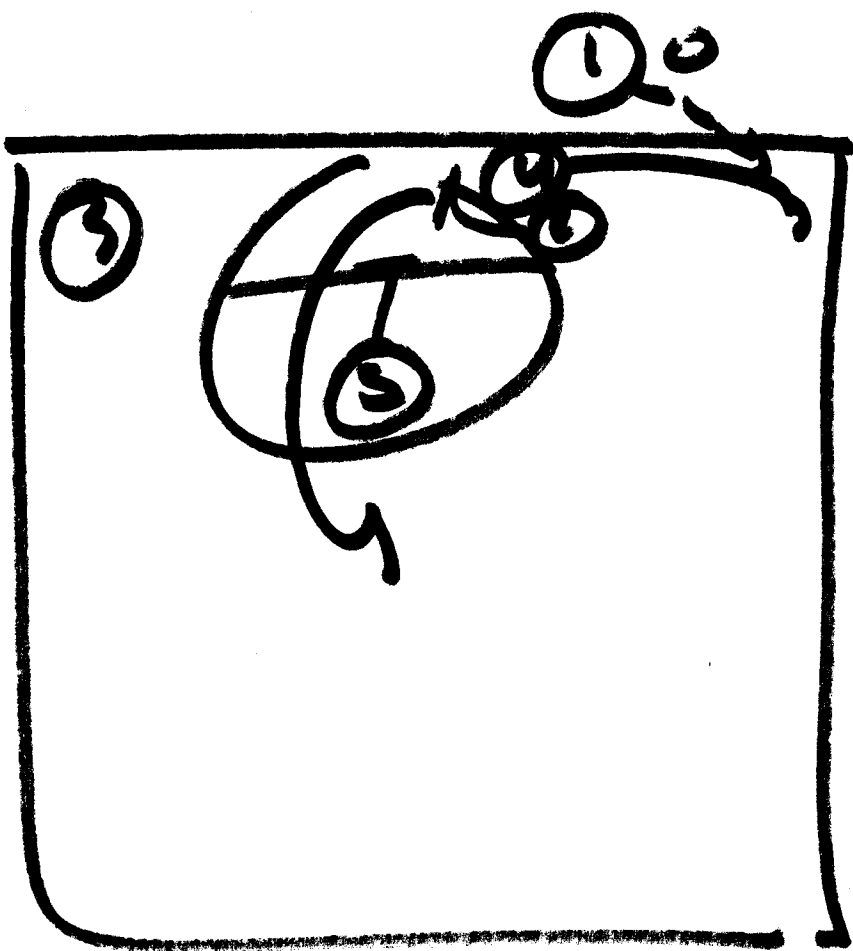


Circle





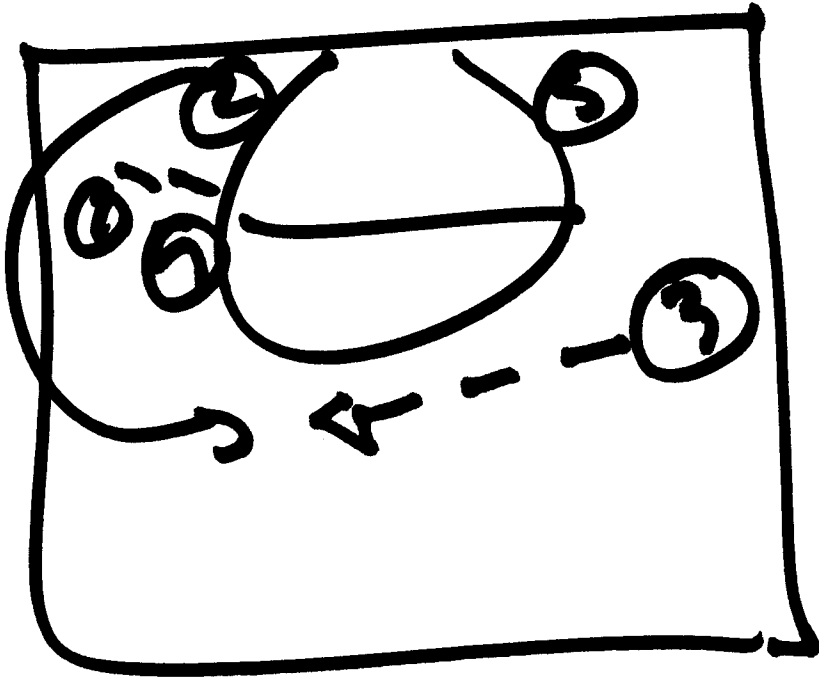
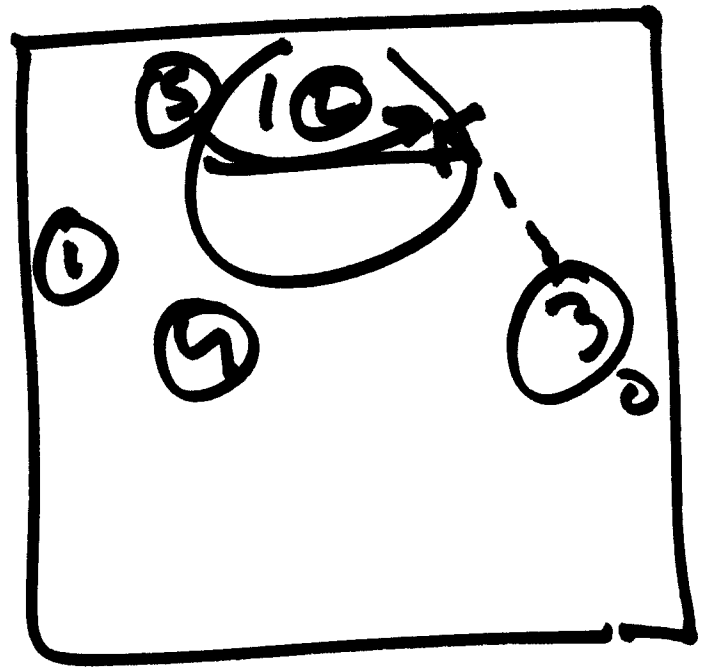
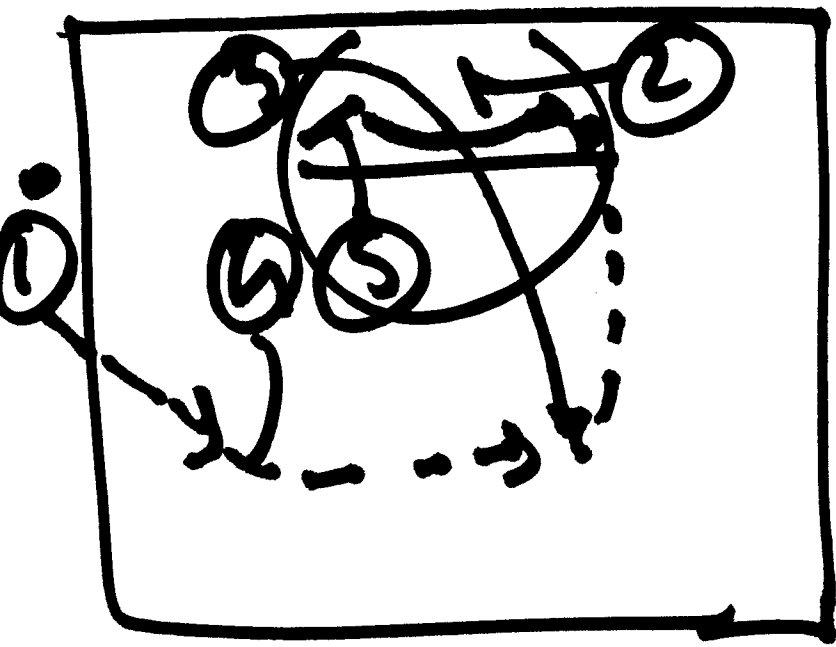
5

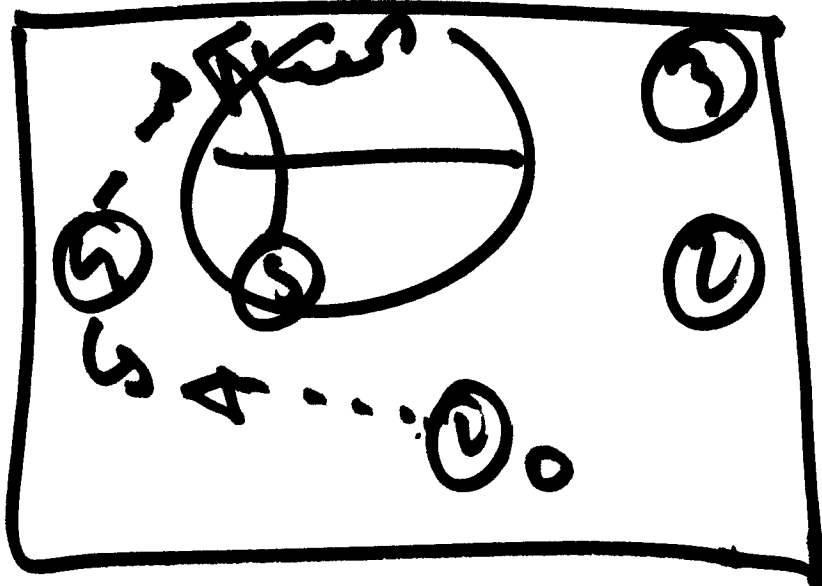
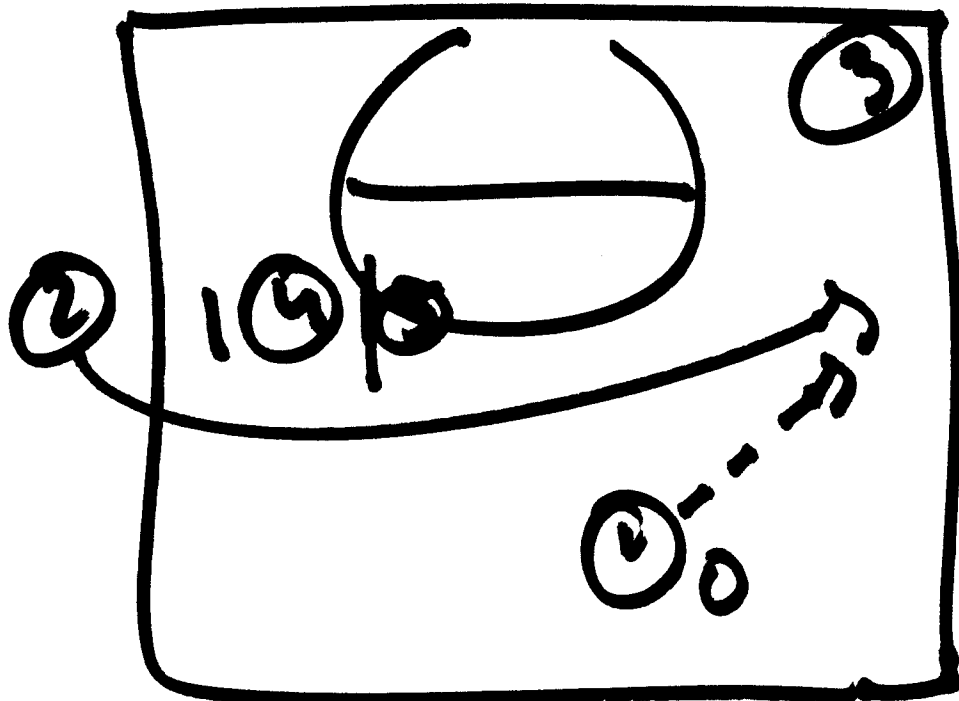
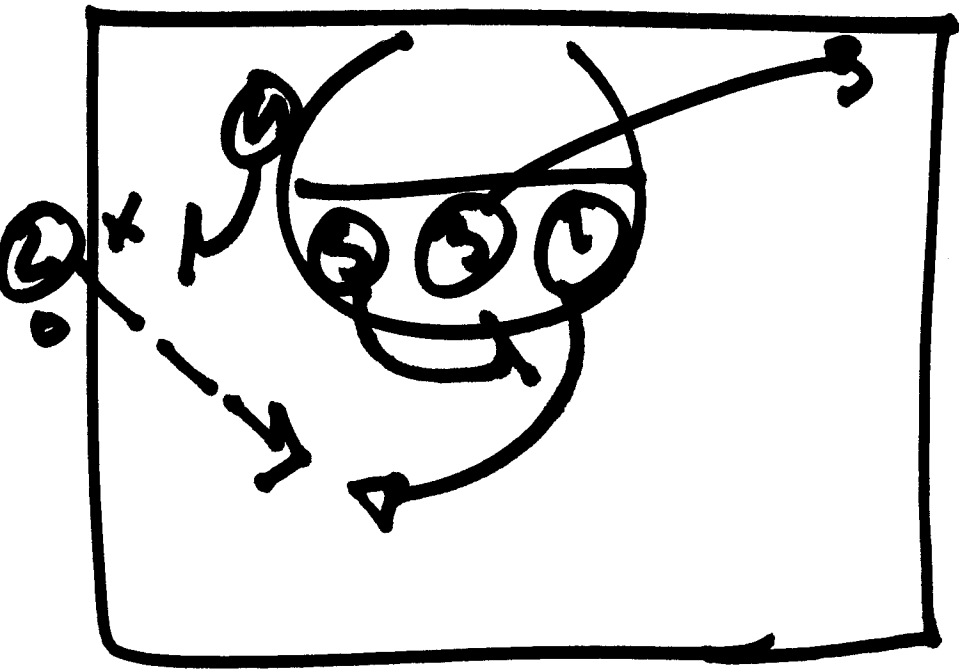


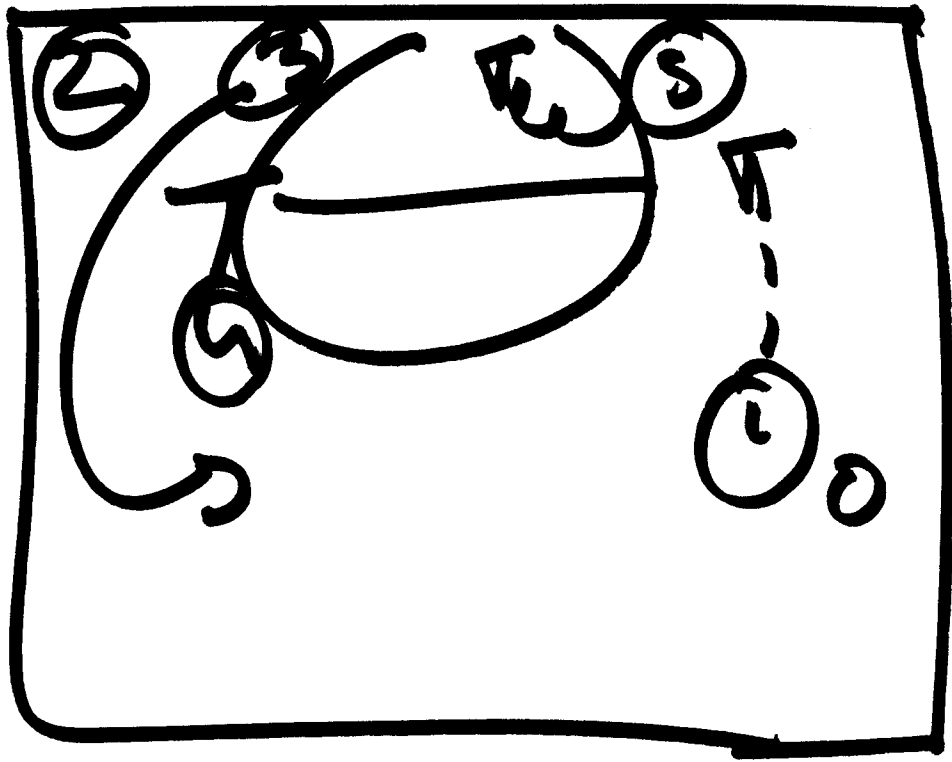
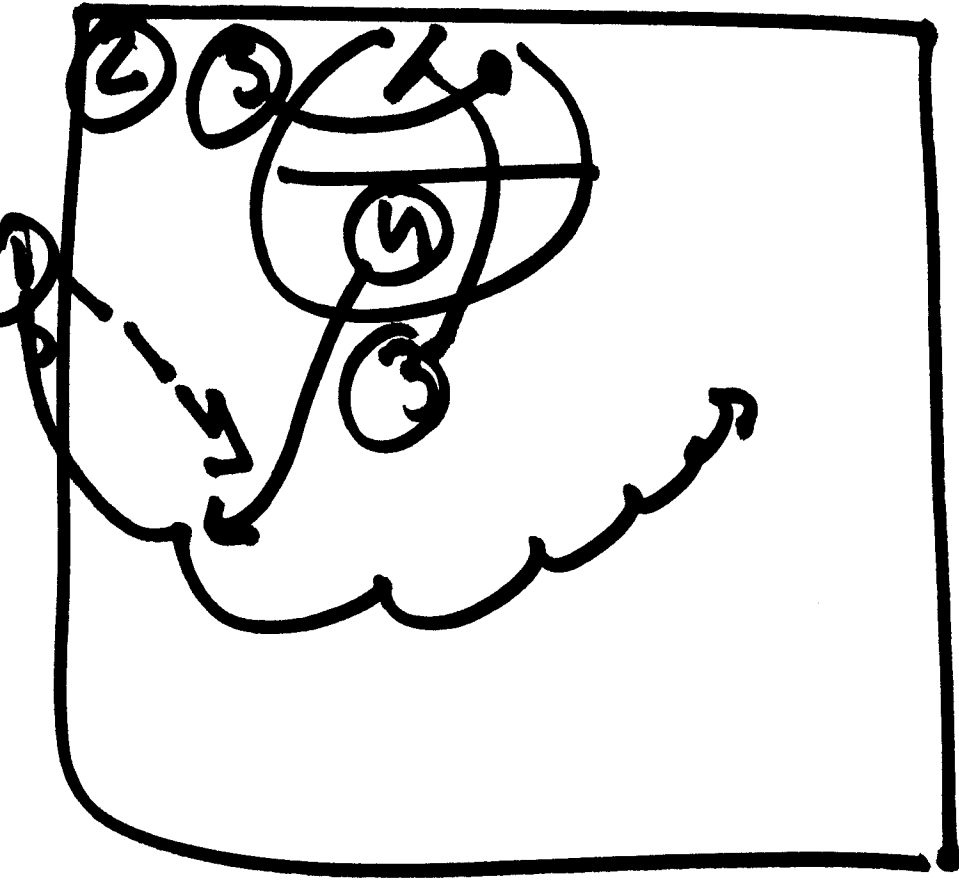
Sideline

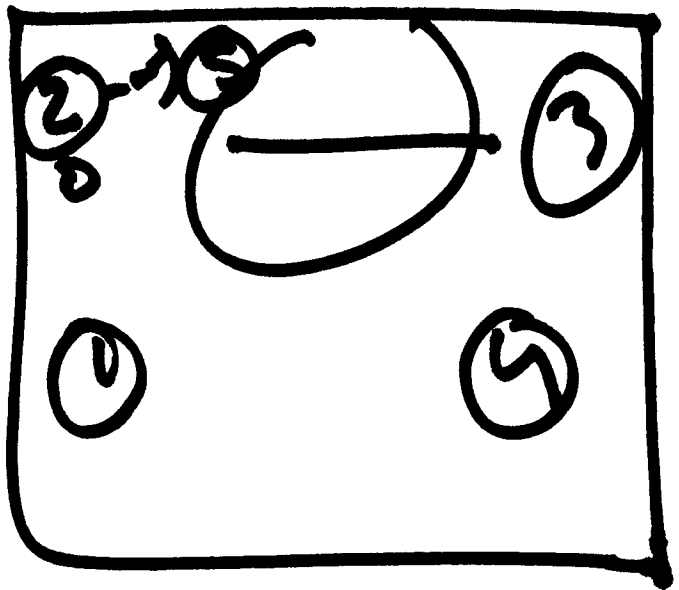
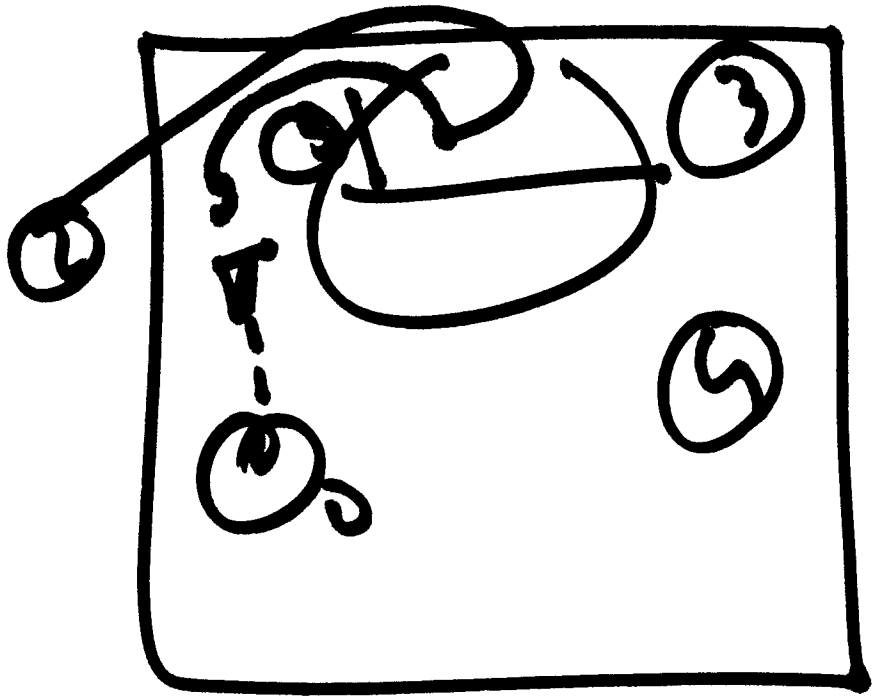
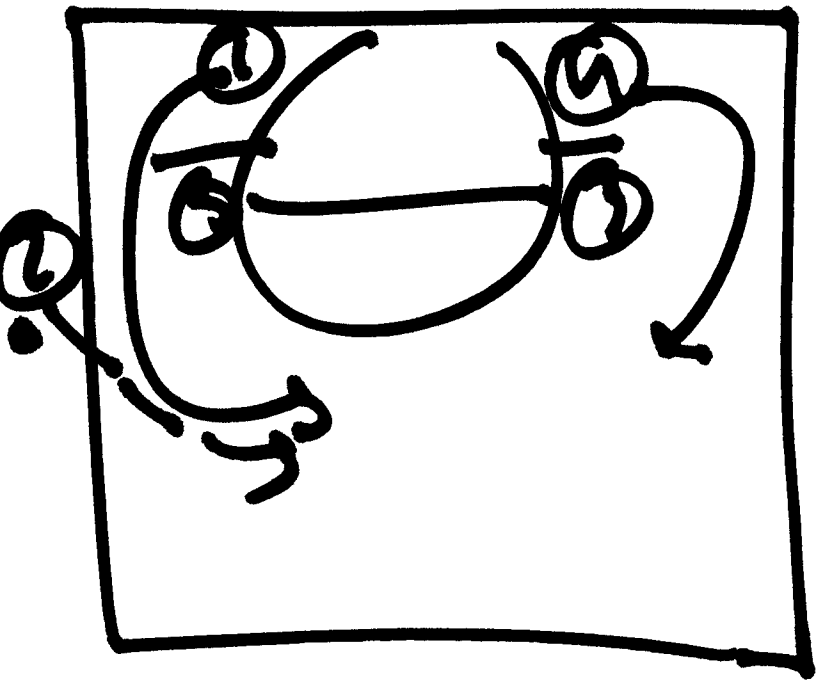
Plays

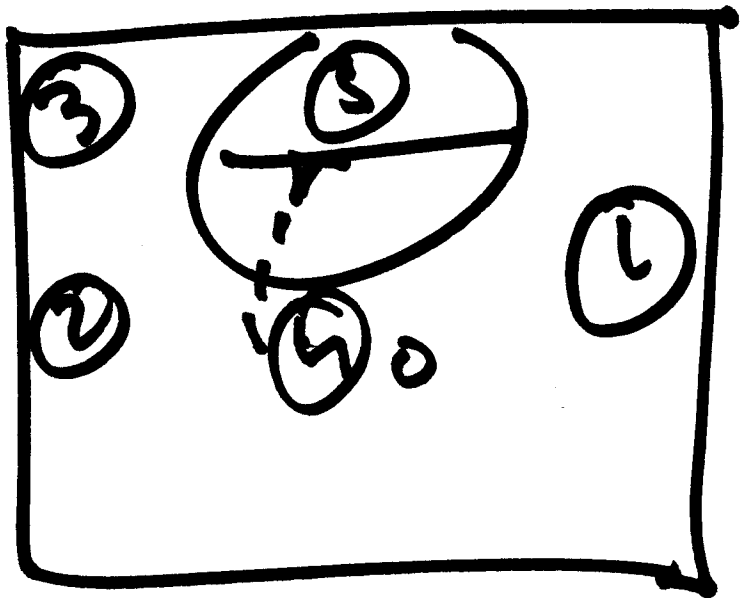
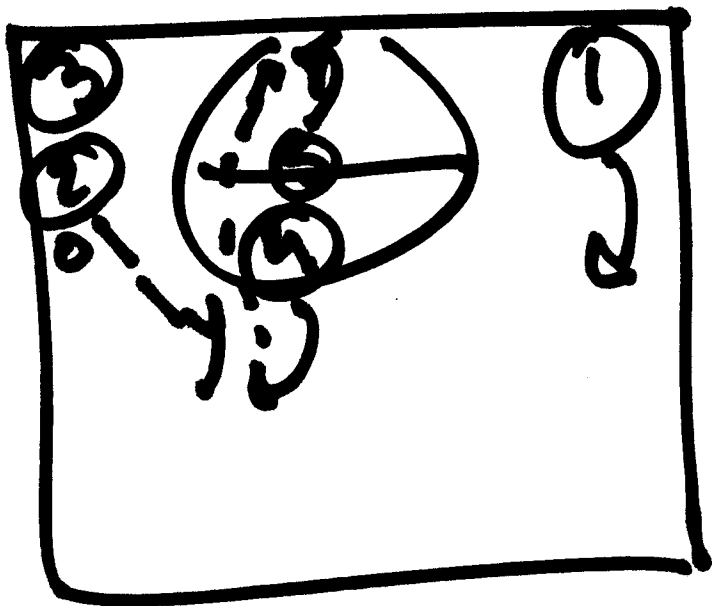
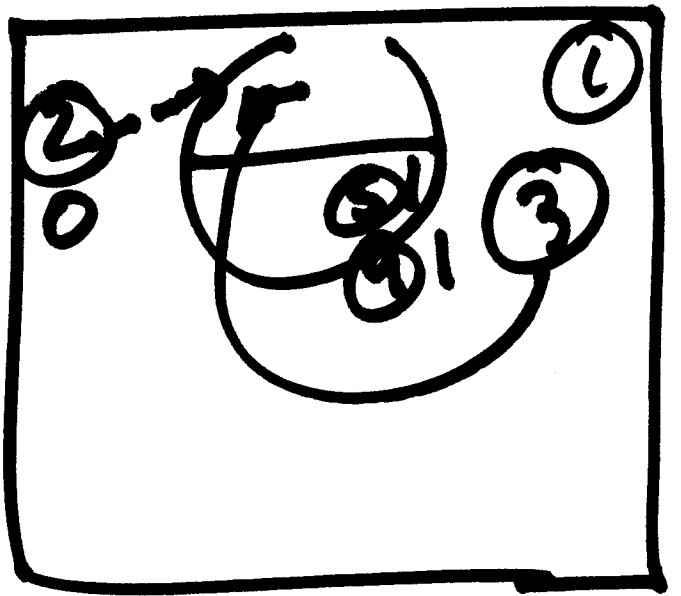
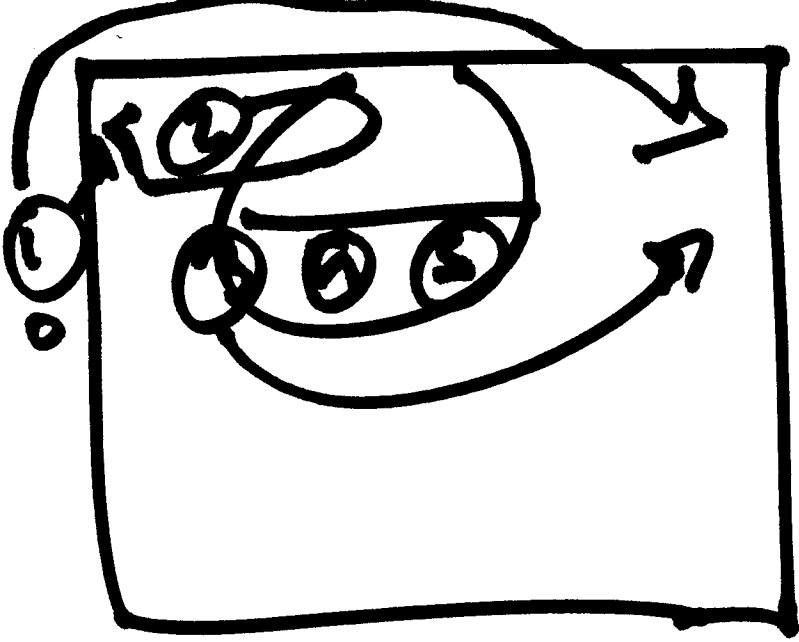
2012 - 2013



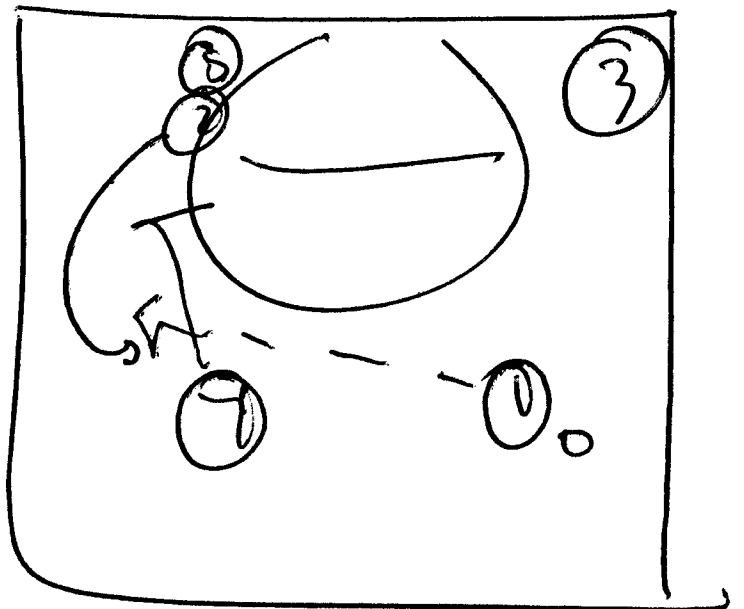
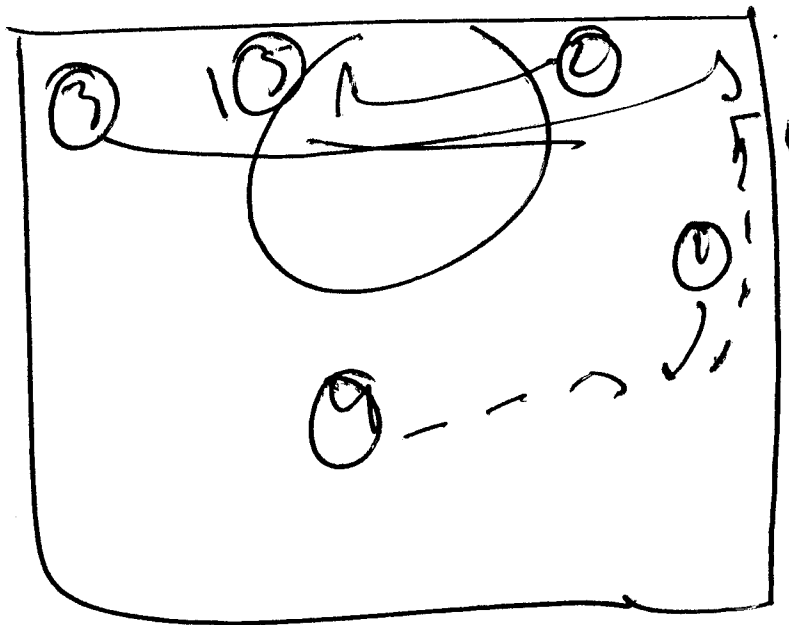
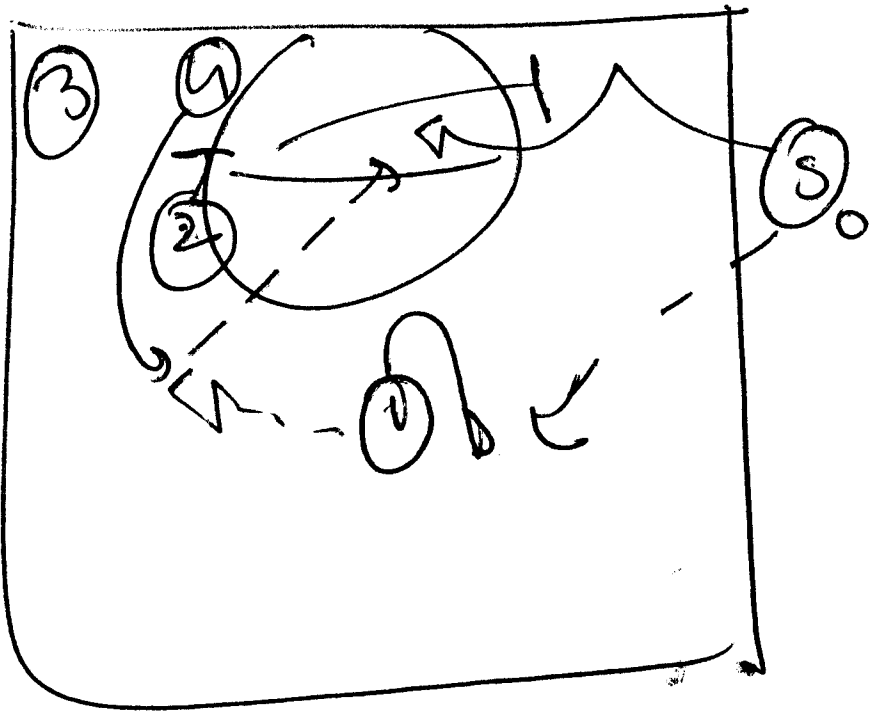


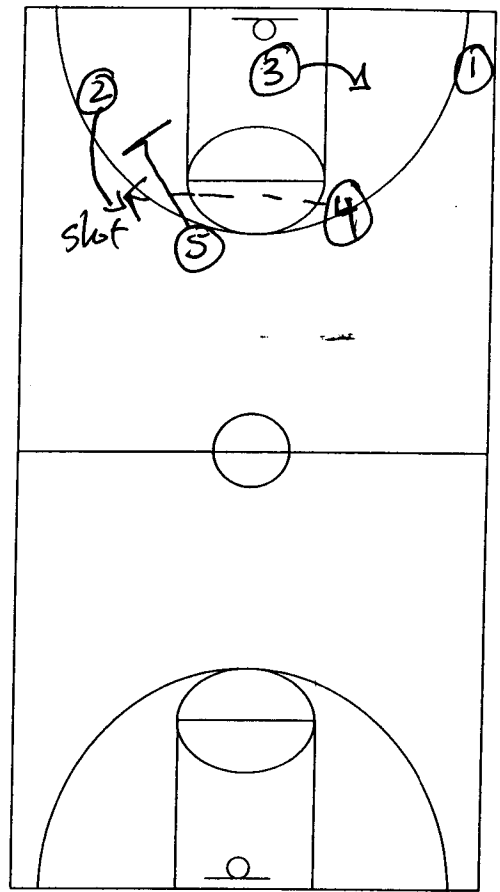
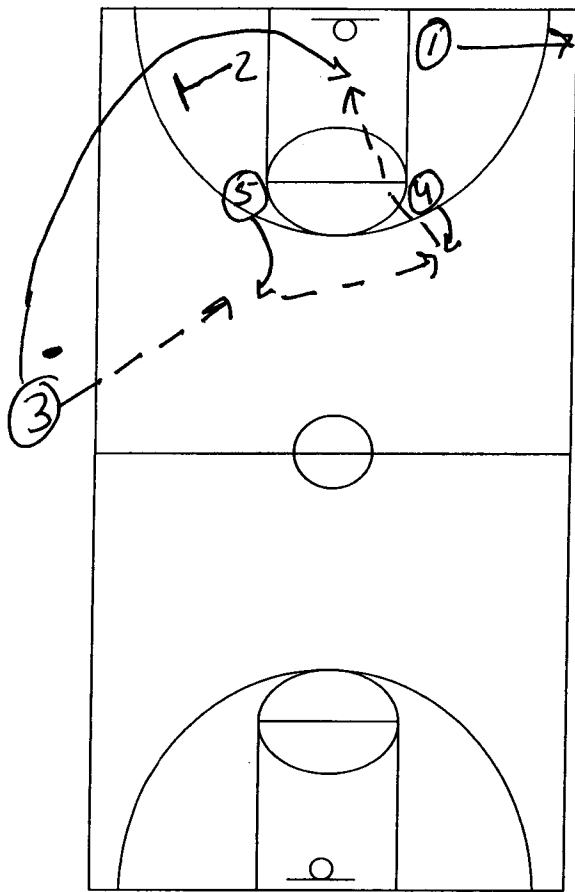






(K)

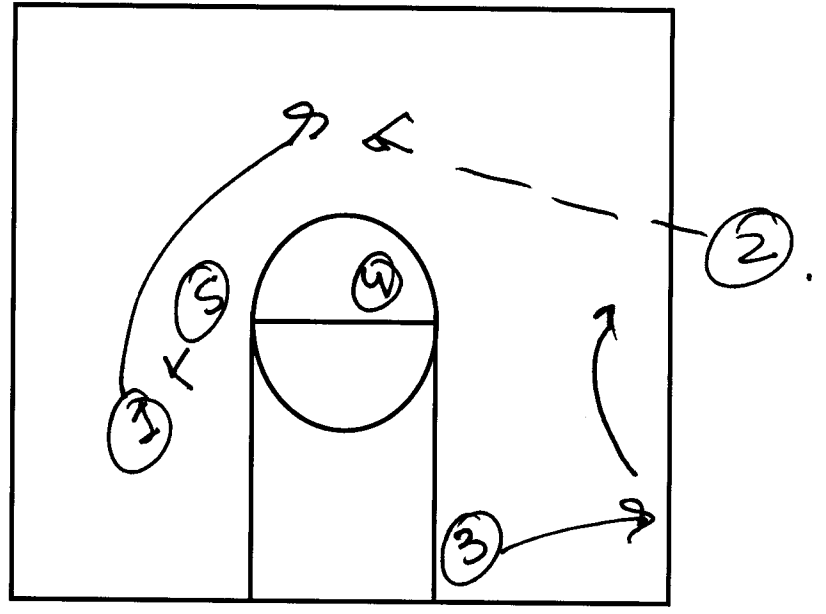




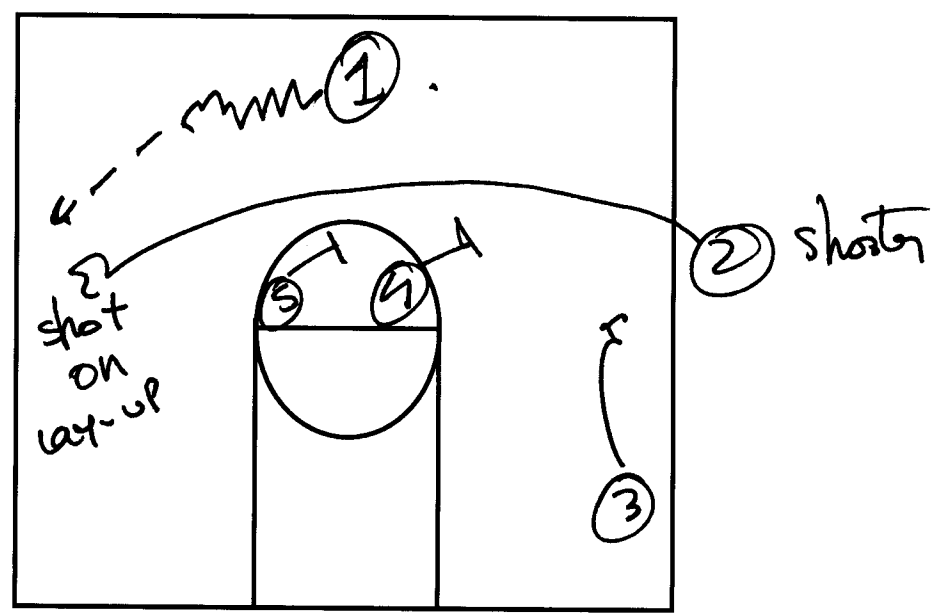
Player 3 passes to 5 who has popped out on the side. While 5 passes the ball to 4, 3 sets off 2's back screen into the lane. Player 4 looks to pass to 3 in the lane as 1 clears the screen by popping out to the corner.

If the pass to 3 is denied, 5 sets a screen for 2 to complete the "screen the screener" action as 4 passes to 2.

5 Sum for 1
 3 kps out
 2 inbnd to 1

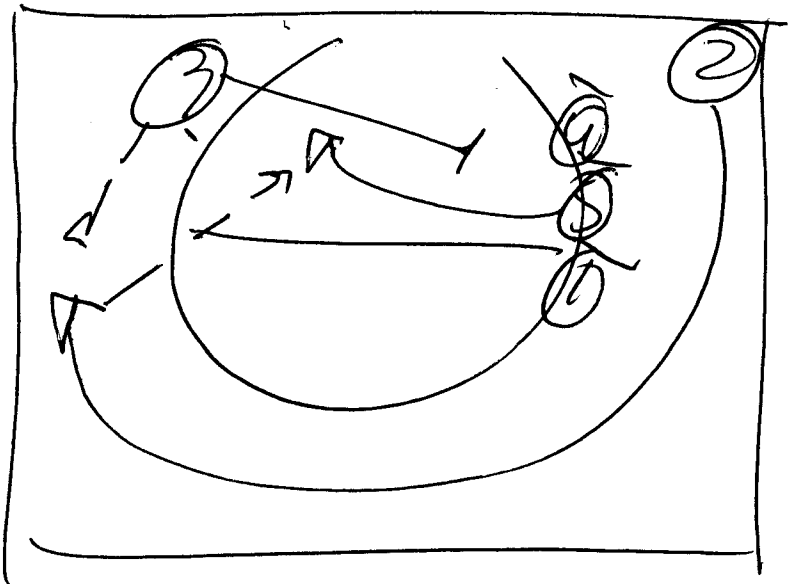
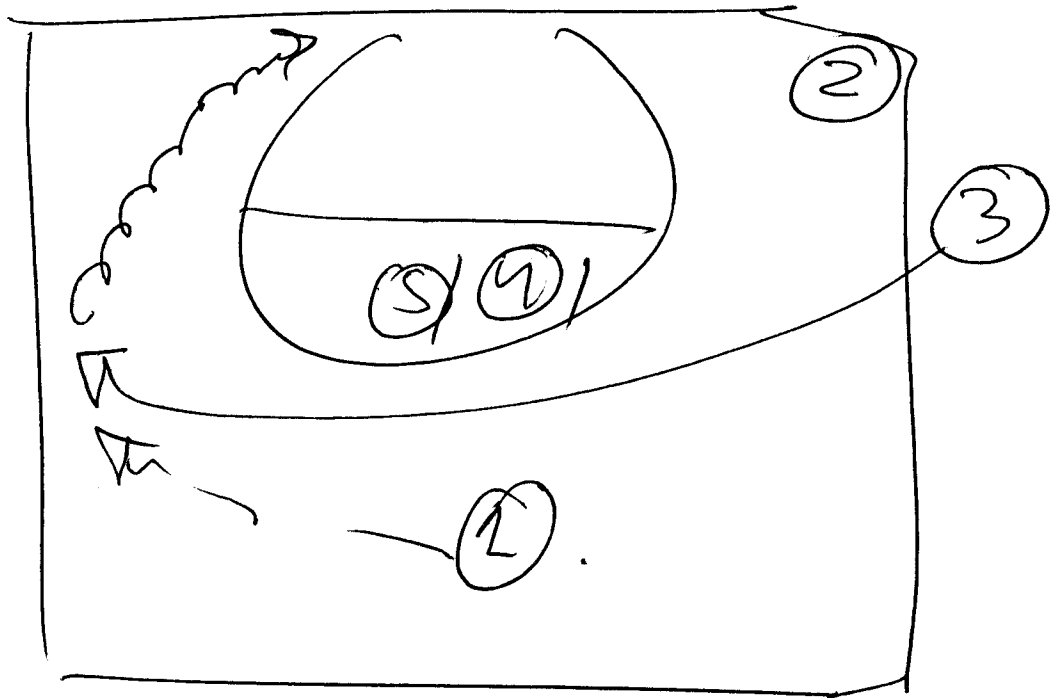
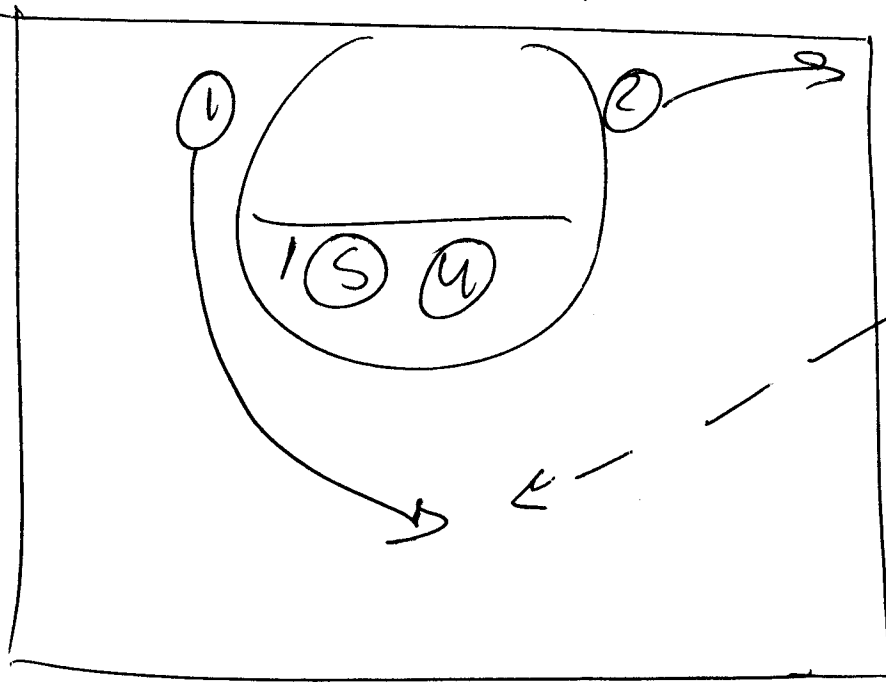


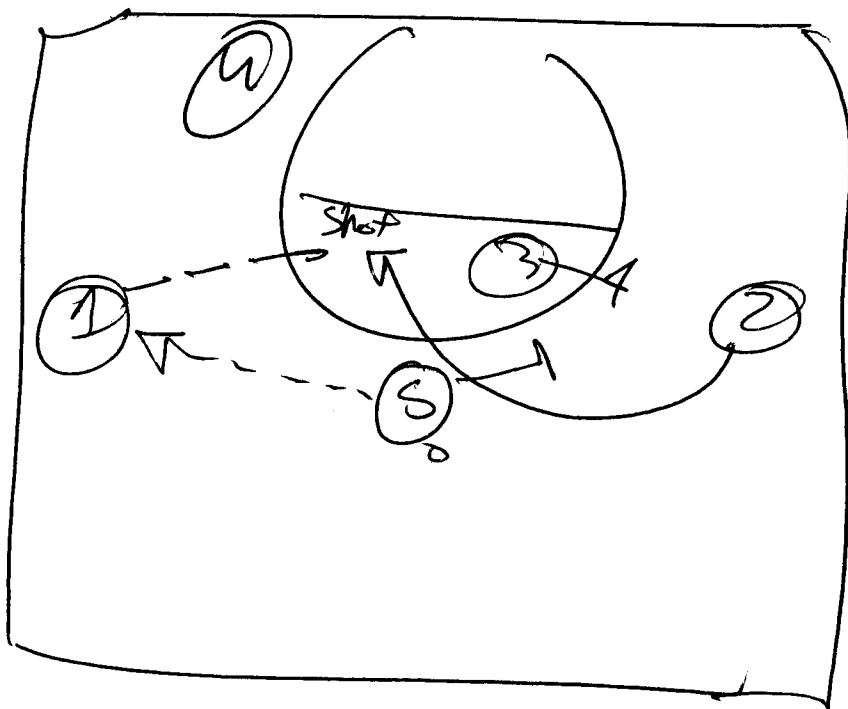
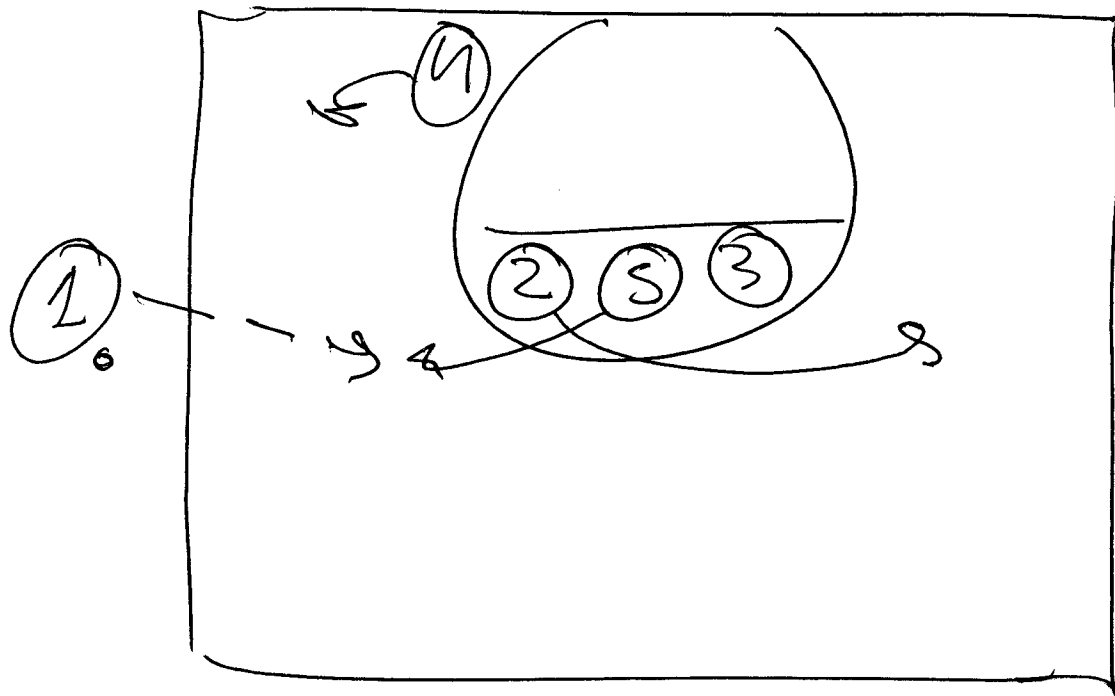
5 or 4 Sum for 2
 1 pass to 2
 2 shoots on go
 for lay-up



"GO"

"45"



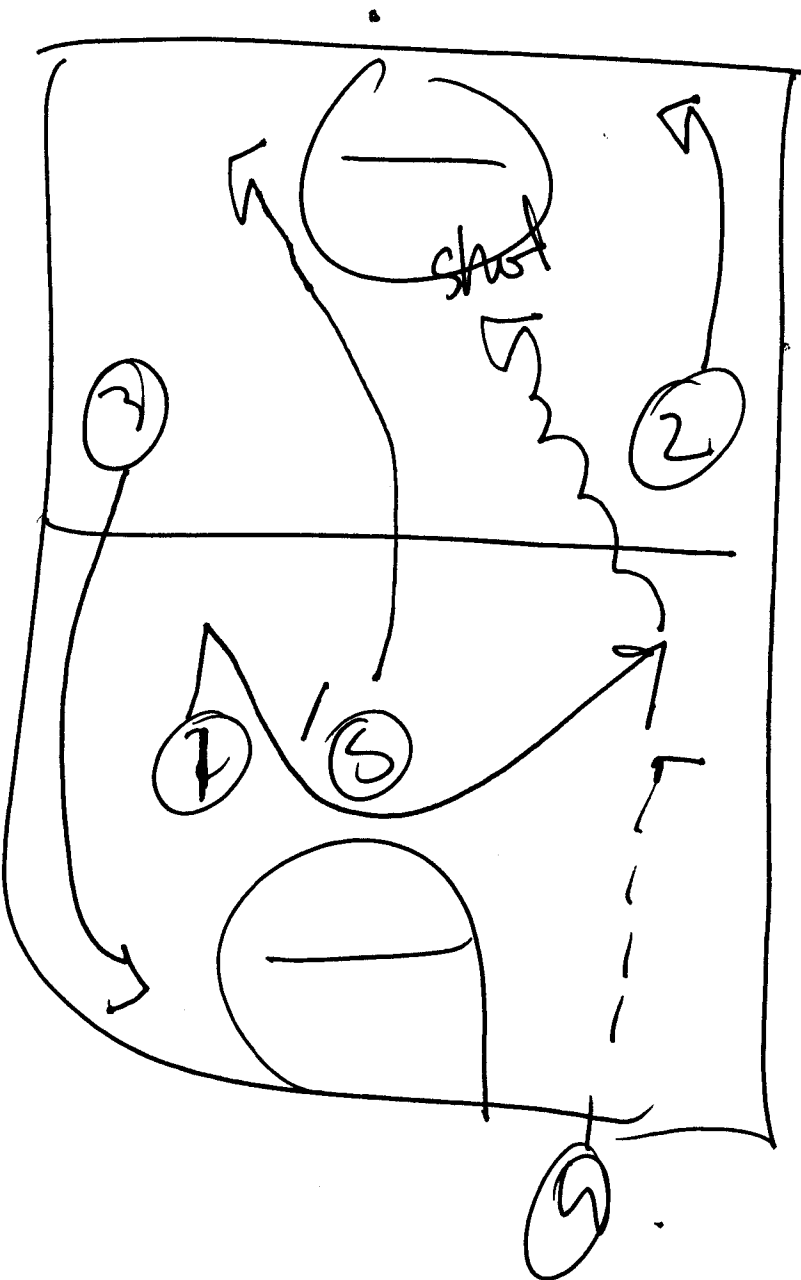


Attacking
Full Count
Press

new

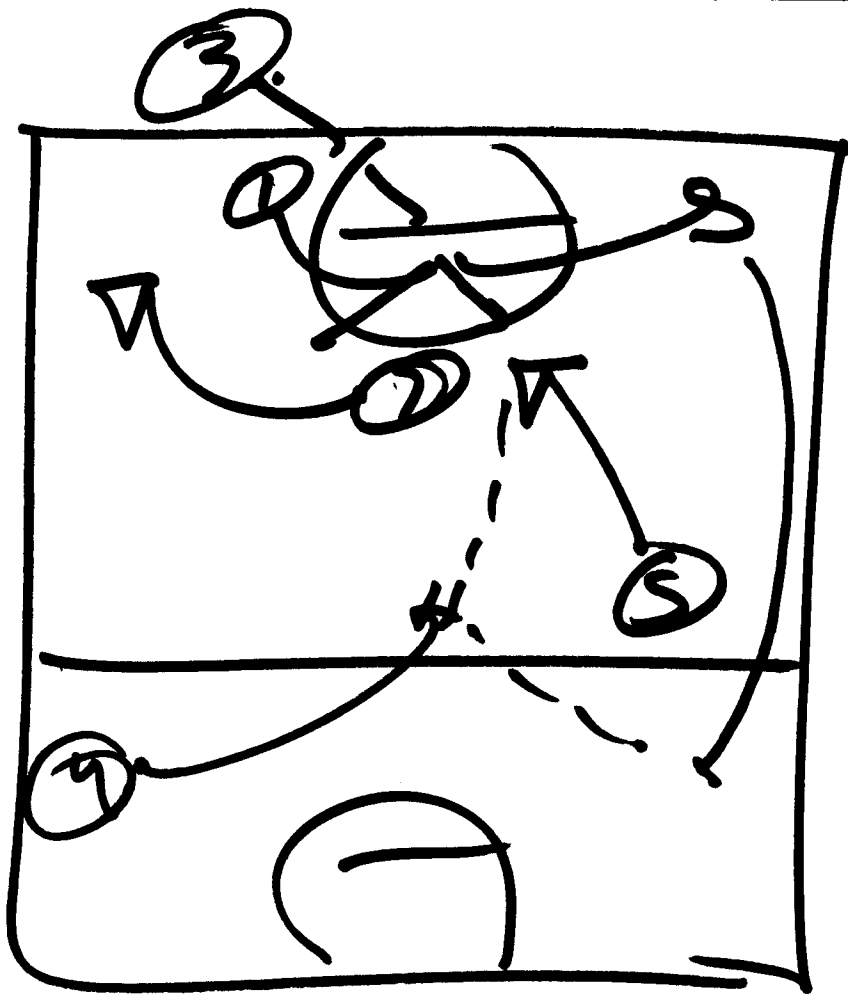
2013

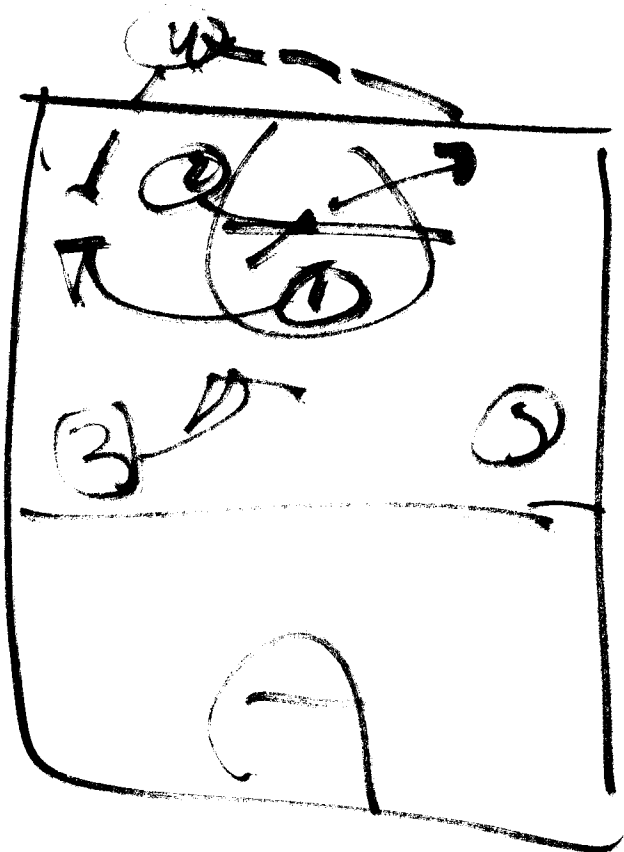
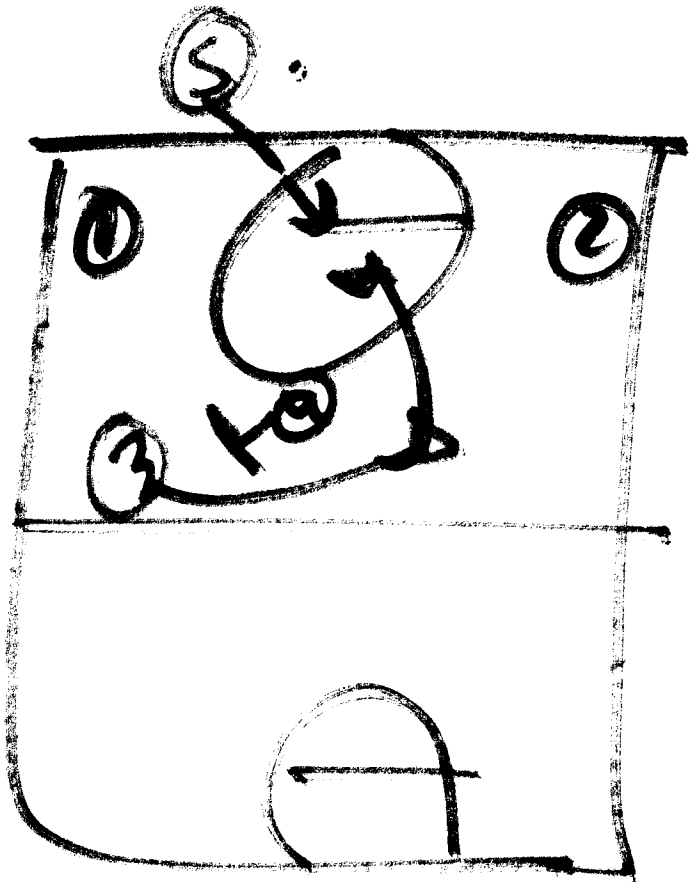
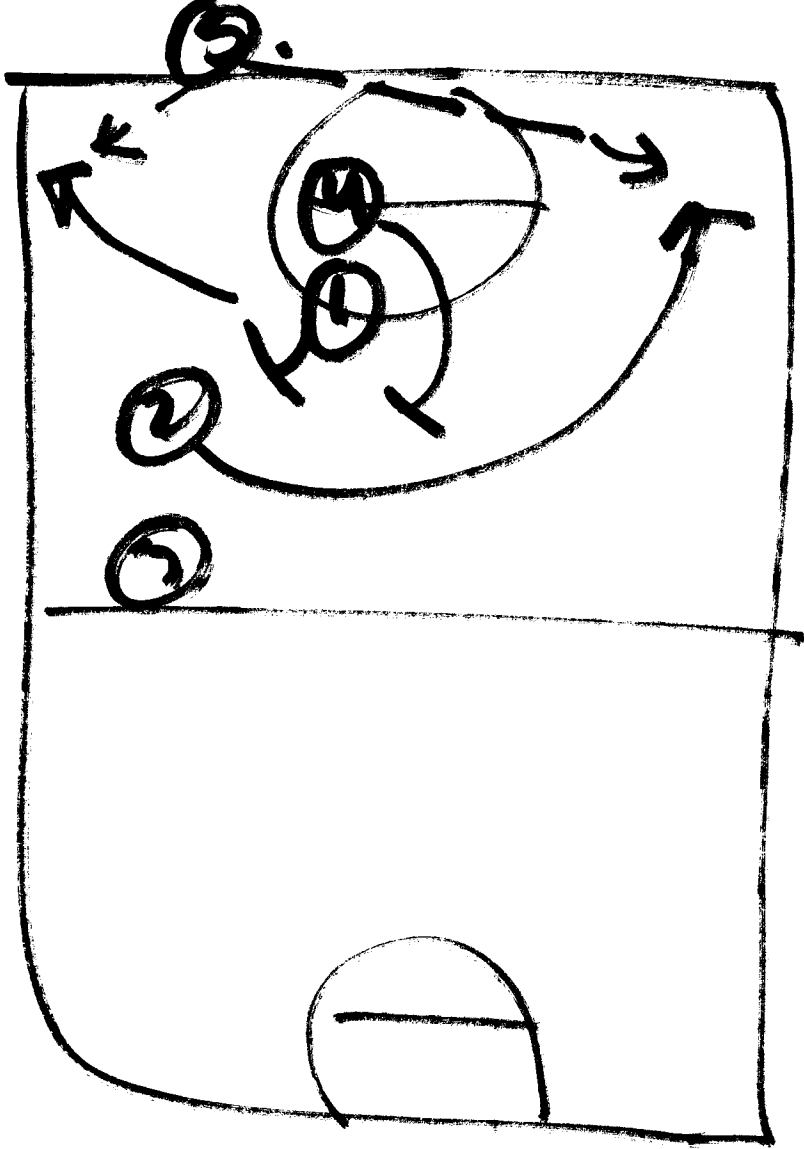
5 comes on the clock
before the half time.

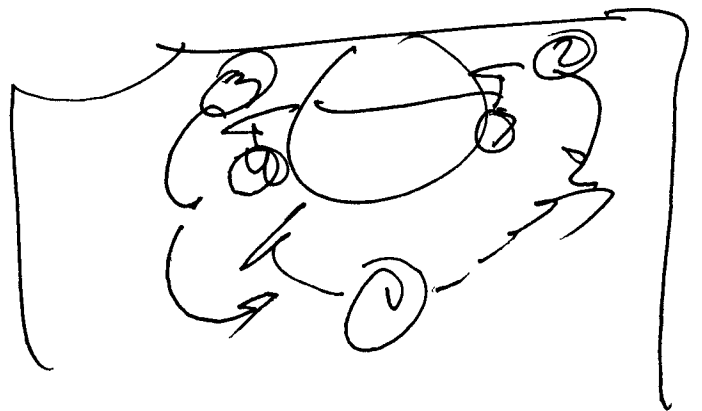
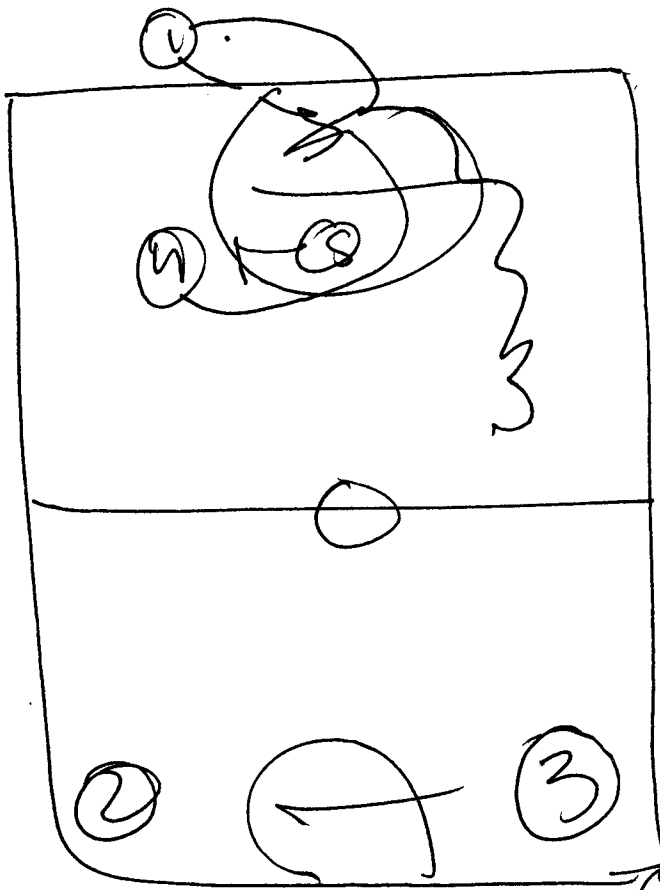


1 falls direction
and gets seen by 8
3 comes down to pretend
to get the ball.
4 goes to 5.
1 dries up the court
for a shot.

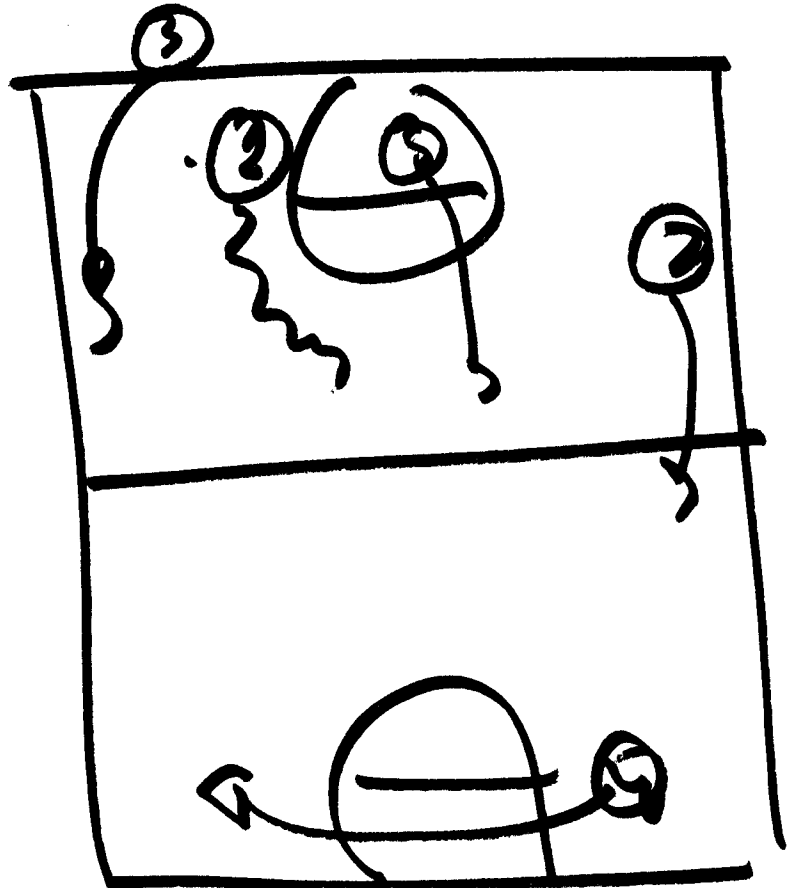
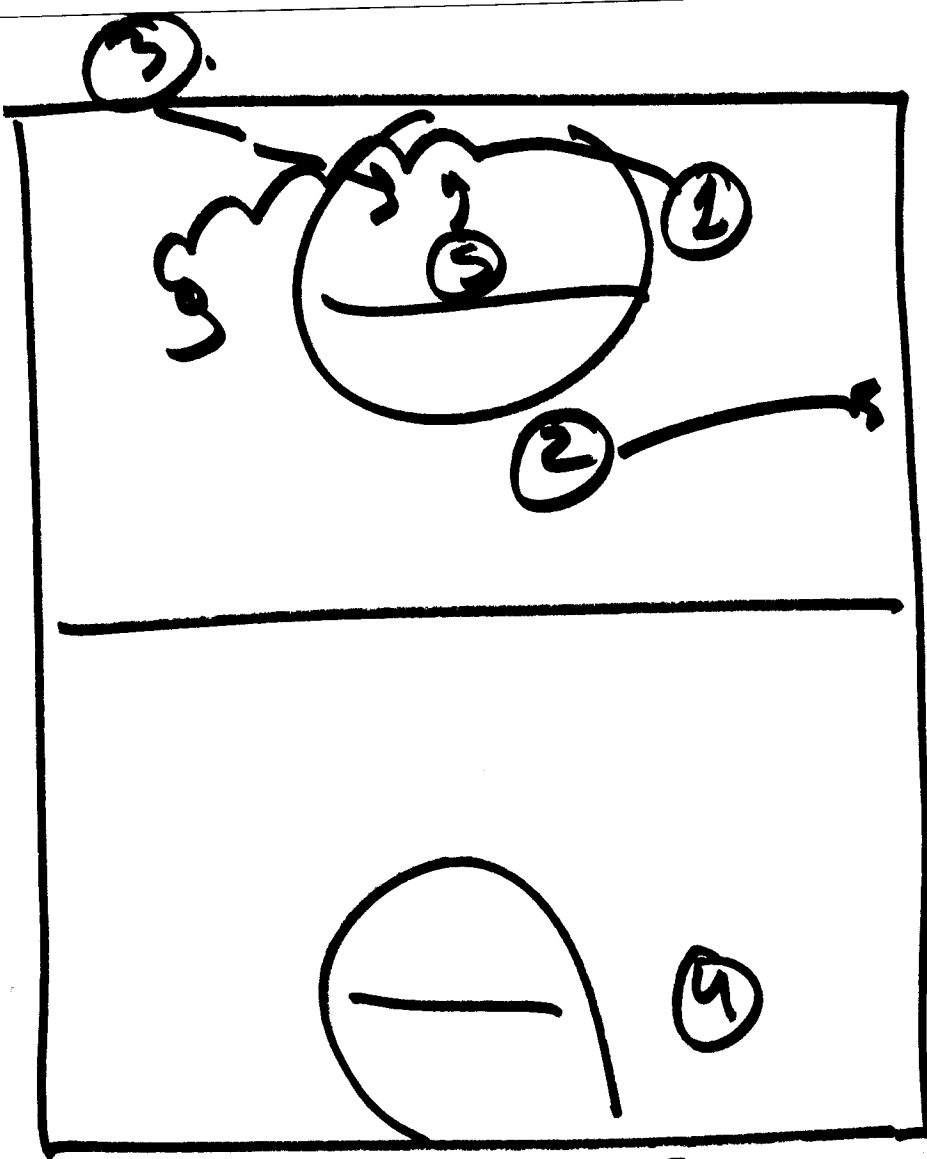
① ②

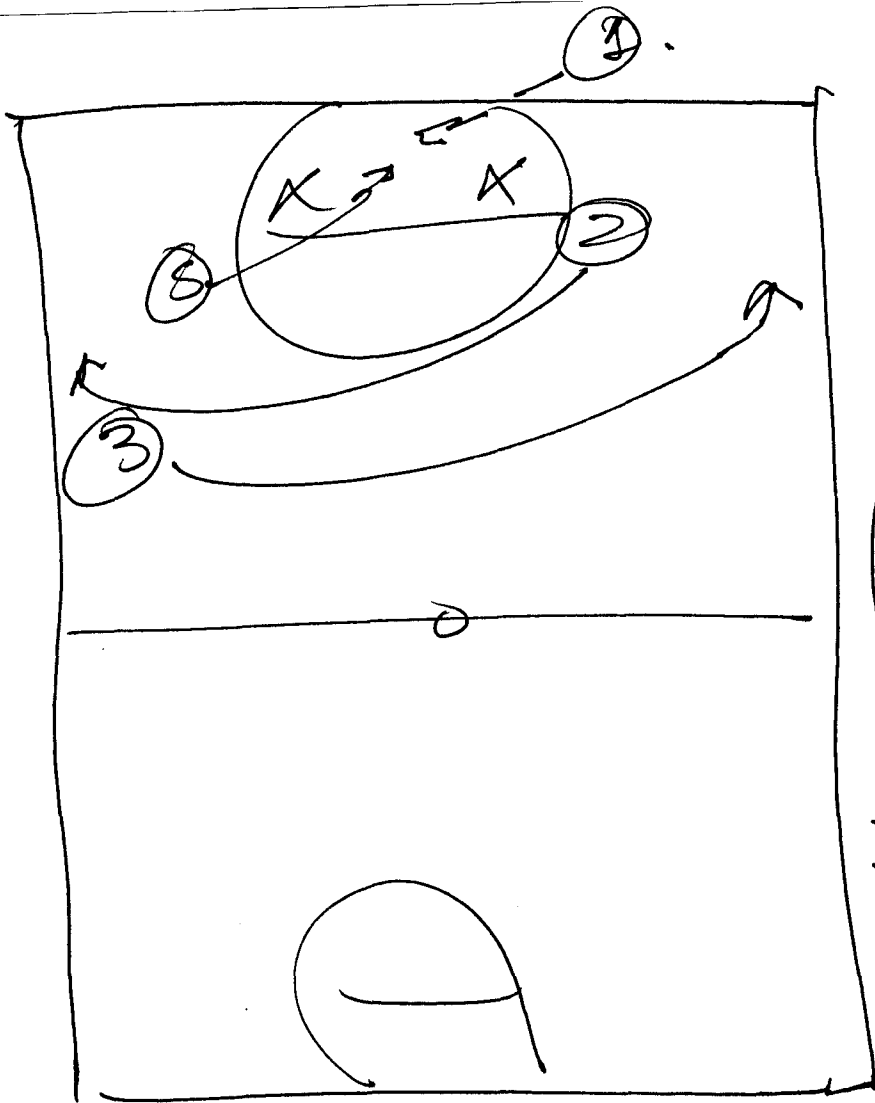






5 head off to ①

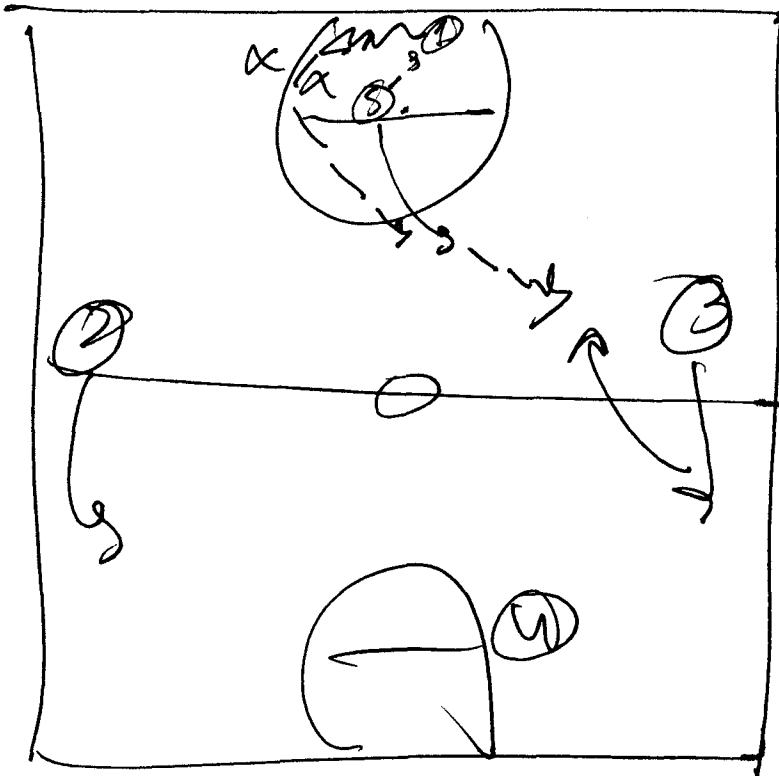




1 inbounds to 5
w/ 2 and 3 crossing

Attacking Full
court press

no defenses against
the inbounds, 1



5 hands off to 1

1 can pass to 5

and 5 has passes

2 and 3 to pass